

## MYC-Tag Rabbit mAb

www.dia-an.cn

Cat#: 3097R

027-59325199

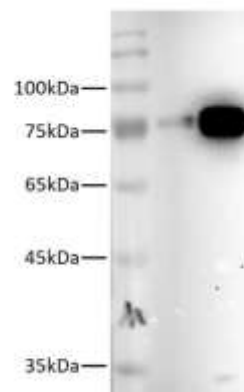
sevice@dia-an.com

Only For Research. Not For Diagnosis.

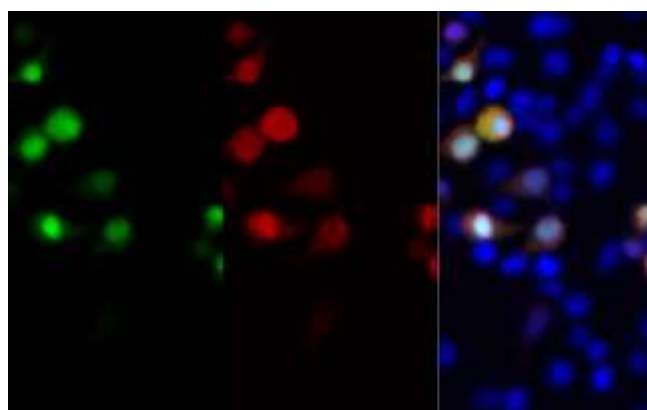
<b>Synonyms:</b>	EQKLISEEDL
<b>Attribute:</b>	Rabbit monoclonal Antibody
<b>Isotype:</b>	IgG
<b>Purity:</b>	Antigen Affinity Purification
<b>Application:</b>	ELISA, WB, IP, IF
<b>Calculated MW:</b>	N/A
<b>Observed MW:</b>	N/A
<b>Reactivity:</b>	Proteins fused with MYC tag
<b>Immunogen:</b>	Peptide EQKLISEEDL
<b>Buffer:</b>	PBS with 0.1% sodium azide and 50% glycerol, pH 7.2
<b>Storage:</b>	Store at -20°C. Do not aliquot
<b>Recommended Dilution:</b>	WB: 1:1000-1:10,000 IP: 5ug/sample IF: 1:400-1:800

### Background:

The MYC tag, derived from the c-MYC protein, is a popular epitope tag for detecting the expression of recombinant proteins in yeast, bacteria, insect, and mammalian cell systems. It can be used for affinity chromatography, then used to separate recombinant, overexpressed protein from wild type protein expressed by the host organism. It can also be used in the isolation of protein complexes with multiple subunits.



Western Blotting of MYC-Tag fused recombinant protein with Anti-MYC rabbit monoclonal antibody at dilution of 1:5000.



Immunofluorescent analysis of MYC-GFP transfected 293 cells with 3097R at dilution of 1:500.

We focus on precise protein quantification