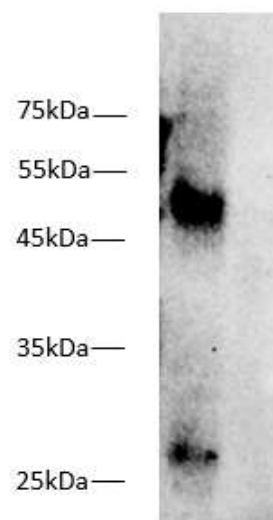


Anti-MHC class I Mouse Monoclonal Antibody (W6/32)

Cat#: 2229

Synonyms:	MHCI, HLA, HLA Class I
Attribute:	Mouse Monoclonal Antibody
Isotype:	Ig2a
Purity:	Protein A Purified
Application:	ELISA, WB, IP
Calculated MW:	44kDa
Observed MW:	47kDa
Identified Reactivity:	Human, Mouse, Rat, Guinea pig, Rabbit, Porcine, Bovine, Caprine, Ovine, Gallus, Equine
Immunogen:	Membrane of human tonsil cells
Buffer:	PBS with 0.1% sodium azide and 50% glycerol, pH 7.2
Storage:	Store at -20°C. Do not aliquot
Recommended Dilution:	WB: 1:1000-2000 IP: 3ug/Sample



Western Blot analysis of anti MHC I antibody on mouse spleen lysates, at dilution of 1:1000

Background:

MHC class I Antibody (W6/32) is a high quality monoclonal MHC class I antibody (also designated MHC antibody, MHC class 1 antibody, HLA-A (Major Histocompatibility Complex, Class 1a) antibody, HLA-B (Major Histocompatibility Complex, Class 1b) antibody, HLA-C (Major Histocompatibility Complex, Class 1c) antibody, MHC class 1 heterodimer receptor heavy chain component antibody, or MHC class I cell surface receptor antibody) suitable for the detection of the MHC class I protein of human origin.