

mCherry mouse mAb

www.dia-an.cn

Cat#: 2099

027-59325199

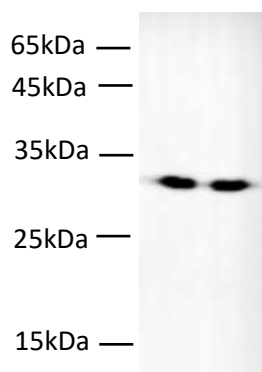
sevice@dia-an.com

Only For Research. Not For Diagnosis.

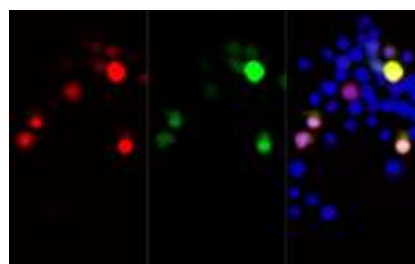
Synonyms:	mCherry
Attribute:	Mouse Monoclonal Antibody
Isotype:	IgG1
Purity:	Protein A/G Purification
Application:	ELISA, WB, IP
Reactivity:	Species independent
Immunogen:	Recombinant full length protein of mCherry.
Buffer:	PBS with 0.1% sodium azide and 50% glycerol, pH 7.2
Storage:	Store at -20°C. Do not aliquot
Recommended Dilution:	WB: 1:1000-2000 IP: 3ug/sample

Background:

mCherry is a member of the mFruits family of monomeric red fluorescent proteins (mRFPs). As a RFP, mCherry was derived from DsRed of *Discosoma* sea anemones unlike green fluorescent proteins (GFPs) which are often derived from *Aequorea victoria* jellyfish. mCherry belongs to the group of fluorescent protein chromophores used as instruments to visualize genes and analyze their functions in experiments.



Western blot of mCherry protein(27kDa) with anti-mCherry antibody (Cat#: 2099) at dilution of 1:2000



Immunofluorescent analysis of 293F cells transfected with mCherry, using 2099 at 1:12000 dilution

We focus on precise protein quantification



Western blot of Zebra fish whole lysates