

## Anti-Beta Tubulin mouse mAb

www.dia-an.cn

Cat#: 2062

027-59325199

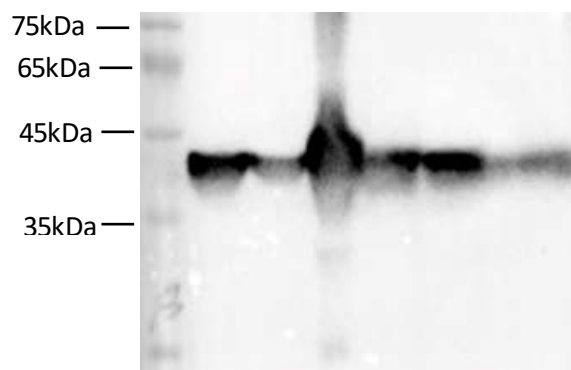
sevice@dia-an.com

Only For Research. Not For Diagnosis.

<b>Synonyms:</b>	beta Tubulin
<b>Attribute:</b>	Mouse Monoclonal Antibody
<b>Isotype:</b>	IgG2a
<b>Purity:</b>	Antigen Affinity Purification
<b>Application:</b>	ELISA, WB, IP, IF
<b>Calculated MW:</b>	55kDa
<b>Observed MW:</b>	55kDa
<b>Reactivity:</b>	Human, Mouse, Rat, Zebra fish
<b>Immunogen:</b>	Recombinant Human TUBB protein
<b>Buffer:</b>	PBS with 0.1% sodium azide and 50% glycerol, pH 7.2
<b>Storage:</b>	Store at -20°C. Do not aliquot
<b>Recommended Dilution:</b>	WB: 1:5000-10000 IP: 1:5000-10000 IF: 1:1000-2000

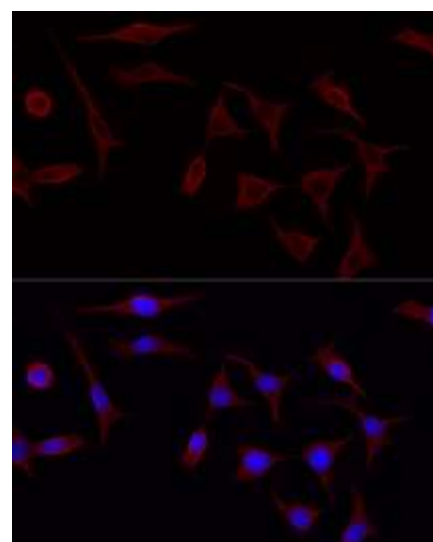
### Background:

In eukaryotes there are six members of the tubulin superfamily.  $\alpha$ - and  $\beta$ -tubulins polymerize into microtubules, a major component of the eukaryotic cytoskeleton. Microtubules function in many essential cellular processes, including mitosis. Both  $\alpha$  and  $\beta$  tubulins have a mass of around 50 kDa. Tubulin was long thought to be specific to eukaryotes. Beta-tubulin gene is commonly used as a loading control for western blot.



Western Blotting with anti-Beta Tubulin monoclonal antibody at dilution of 1:3000

Lane 1: HEK 293 cell lysates  
Lane 2: CHO cell lysates  
Lane 3: Mouse Brain lysates  
Lane 4: Scallop Muscle lysates  
Lane 5: Zebra Fish lysates  
Lane 6: E.coli (Bl21) lysates



Immunofluorescent analysis of HEK293 cells with 2062 2 at dilution of 1:4000

We focus on precise protein quantification

 DIA • AN