

Anti- GAPDH Mouse Monoclonal Antibody

www.dia-an.com

Cat#: 2058

027-59325199

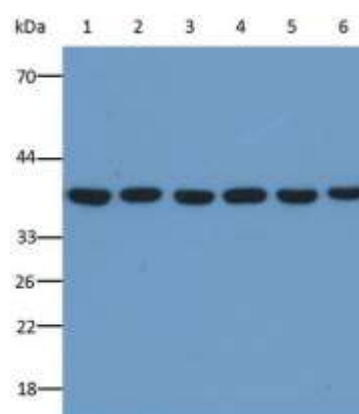
service@dia-an.com

Only For Research. Not For Diagnosis.

Synonyms:	GAPDH
Attribute:	Mouse Monoclonal Antibody
Isotype:	IgG1
Purity:	Protein A Purified
Application:	ELISA, WB, IP
Calculated MW:	36kDa
Observed MW:	36kDa
Identified Reactivity:	Human, Mouse, Rat, Guinea pig, Rabbit, Porcine, Bovine, Caprine, Ovine, Gallus, Equine
Immunogen:	Recombinant Human GAPDH protein expressed by E.Coli
Buffer:	PBS with 0.1% sodium azide and 50% glycerol, pH 7.2
Storage:	Store at -20°C. Do not aliquot
Recommended Dilution:	WB: 1:2000-10000 IP: 3ug/Sample

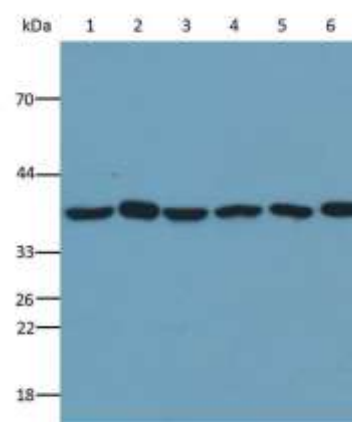
Background:

GAPDH is an enzyme of 37kDa that catalyzes the sixth step of glycolysis and thus serves to break down glucose for energy and carbon molecules. Because the GAPDH gene is often stably and constitutively expressed at high levels in most tissues and cells, it is commonly used as a loading control for western blot and as a control for qPCR.



Western Blot analysis of GAPDH in various cell lines

Lane 1: DU145 whole cell lysate
Lane 2: OS-RC-2 whole cell lysate
Lane 3: T-47D whole cell lysates
Lane 4: HEC-1B whole cell lysate
Lane 5: HepG2 whole cell lysate
Lane 6: HEK-293 whole cell lysate
Lysates/proteins at 20µg per lane.
Primary Ab: 2058 at 1:10000 dilution



Western Blot analysis of GAPDH in various tissues of different species

Lane 1: Rat heart, whole tissue lysate
Lane 2: Porcine brain, whole tissue lysate
Lane 3: Bovine kidney, whole tissue lysate
Lane 4: Guinea pig liver, whole tissue lysate
Lane 5: Rabbit pancreas, whole tissue lysate
Lane 6: Caprine spleen, whole tissue lysate
Lysates/proteins at 20µg per lane.
Primary Ab 2058 at 1:5000 dilution

We focus on precise protein quantification