

Anti-Streptavidin Mouse Monoclonal Antibody

www.dia-an.cn

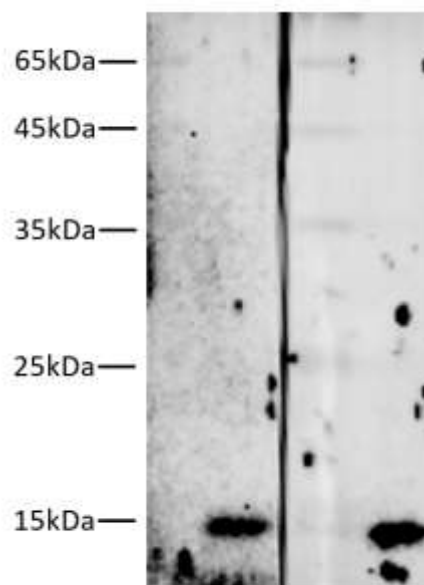
Cat#: 2238

027-59325199

sevice@dia-an.com

Only For Research. Not For Diagnosis.

Synonyms:	Avidin
Attribute:	Mouse Monoclonal Antibody
Isotype:	IgG1
Purity:	Protein A/G Purification
Application:	ELISA, WB, IP
Calculated MW:	16kDa
Observed MW:	16kDa
Reactivity:	Streptavidin
Immunogen:	Streptavidin
Buffer:	PBS with 0.1% sodium azide and 50% glycerol, pH 7.2
Storage:	Store at -20°C. Do not aliquot
Recommended Dilution:	WB: 1:5000-10000 IP: 3ug/sample



M 1 2

Western Blotting of 10ng Streptavidin (16kDa) with Streptavidin mouse monoclonal antibody at dilution of lane 1: 1:5000; lane 2: 1:10000

Background:

Streptavidin is a biotin-binding protein found in the culture broth of the bacterium *Streptomyces*. Streptavidin can bind to four moles of biotin per mole of protein with extremely high affinity, approximately 10,000-15,000 Da. Streptavidin lacks the carbohydrate side chains present on avidin and has an isoelectric point of 6.5 to avidin's 10 far closer to that at which most useful biological interactions occur. As a result, Streptavidin frequently exhibits much lower non-specific binding than avidin does.

We focus on precise protein quantification